



# HOW TO PROTECT YOUR WATER



**Global Mercury Project**



**Less Mercury, More Gold and Better Health**





**PEOPLE  
NEED  
CLEAN  
WATER**



# WATER

**DIRTY WATER  
CAN MAKE  
PEOPLE  
SICK**

**BAD FOR  
FISH  
ANIMALS  
PEOPLE**







## MERCURY GOES INTO RIVERS

MERCURY CAN  
TRAVEL MANY  
KILOMETERS IN  
RIVERS

**MERCURY MAKES  
PEOPLE SICK,  
EVEN PEOPLE  
LIVING FAR AWAY**



## DANGERS

### MERCURY STICKS TO MUD PARTICLES

MUD IS  
LIKE A RAFT  
THAT CARRIES  
MERCURY FAR  
DOWNSTREAM





## DON'T USE CYANIDE IN TAILINGS WITH MERCURY

THIS MAKES IT EASIER  
FOR MERCURY TO BE  
ABSORBED BY PEOPLE



## WATER



MERCURY



CYANIDE

or



NITRIC ACID  
or  
NATURAL  
ACIDS  
IN SOILS  
OR RIVERS



BACTERIA



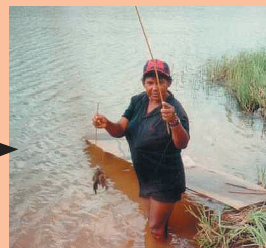
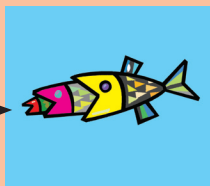
more  
dangerous  
than mercury



**METHYL-  
MERCURY**



Methylmercury concentrates in fish



**AND THEN IN PEOPLE!**

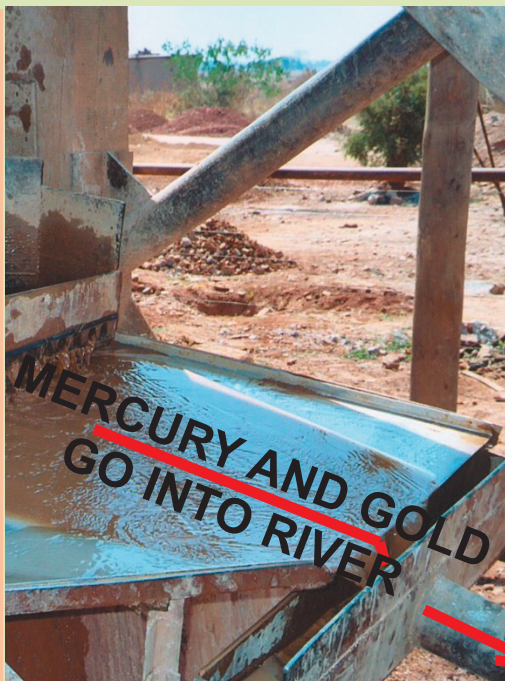






## DON'T USE AMALGAMATING COPPER PLATES

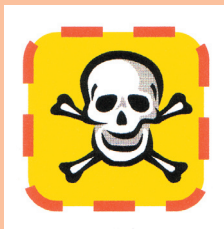
YOU LOSE BOTH  
GOLD AND MERCURY



# DANGERS

## DON'T USE MERCURY IN CENTRIFUGES

YOU LOSE BOTH  
GOLD AND MERCURY





## DON'T USE MERCURY IN BALL MILLS

YOU LOSE BOTH  
GOLD AND MERCURY



# WATER

NEVER  
USE MERCURY  
NEAR OPEN  
WATER

mud carries the  
mercury to  
people downstream

NO KIDS  
NEAR  
MERCURY







USE  
AMALGAMATION  
PONDS

(IF  
AVAILABLE)  
USE  
RUBBER  
GLOVES



## SOLUTIONS



LOW COST PONDS

mercury  
stays  
here





MAKE  
RICHER  
CONCENTRATE

GET MORE GOLD

use  
better  
carpets



## WATER

AMALGAMATE  
CONCENTRATE  
ONLY

use  
amalgamation  
barrels

amalgamation  
barrels  
can be  
very cheap







## USE SETTLING PONDS

WHEN FINISHED,  
COVER WITH  
RED EARTH

mud and  
mercury  
stay here



## SOLUTIONS

### USE LESS MERCURY

TOO  
MUCH  
MERCURY...

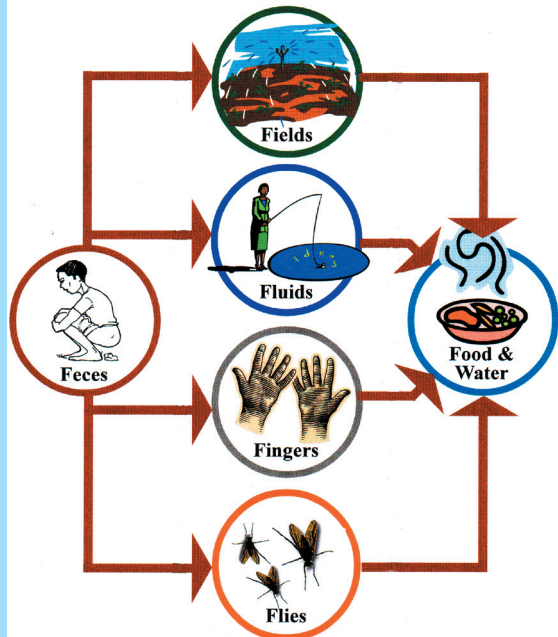
FOR VERY  
LITTLE  
GOLD!!!!





## HUMAN AND ANIMAL WASTE MAKE WATER BAD TO DRINK

3,300,000 PEOPLE  
DIE EACH  
YEAR FROM  
DIARRHOEA



## WATER

### CLEAN DRINKING WATER

GET FROM UPHILL FROM HUMAN AND MINING WASTE







## CLEAN DRINKING WATER

WOMEN MUST BE  
INVOLVED IN PLANNING

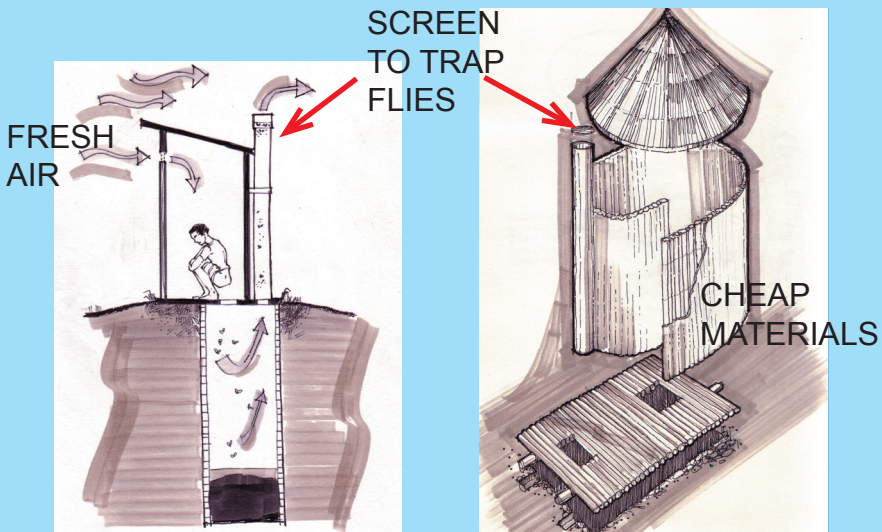
COMMUNITIES  
PARTNER WITH  
INSTITUTIONS

NEIGHBORS DESIGN,  
BUILD AND OPERATE  
WATER SYSTEM  
TOGETHER



## SOLUTIONS

### BUILD PIT LATRINES





# **PROTECT** your children's future



**PEOPLE NEED  
CLEAN WATER**

